

RRTP

REGIONAL RURAL TRANSPORTATION PLAN OVERVIEW



EMERALD COAST REGIONAL COUNCIL

REGIONAL RURAL TRANSPORTATION PLAN

Regional Rural Transportation Plan PROJECT PLANNING TEAM

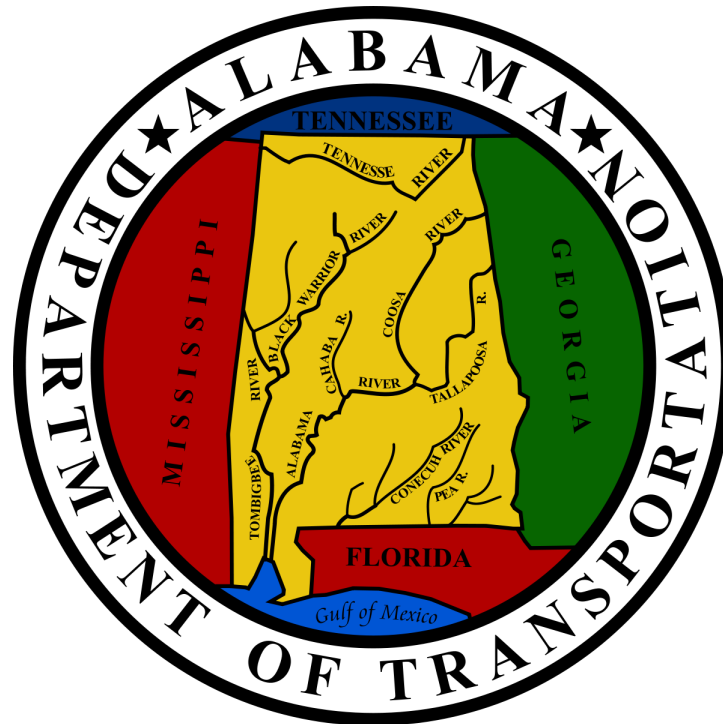


Austin Mount | ECRC CEO

Mary Beth Washnock | ECRC Transportation Director

- Angela Bradley | ECRC Transportation Planner
- Gary Kramer | ECRC Transportation Planner
- Jessica Walton | ECRC GIS Coordinator
- Tanya Sanders Branton | FDOT, District 3 Planning Specialist

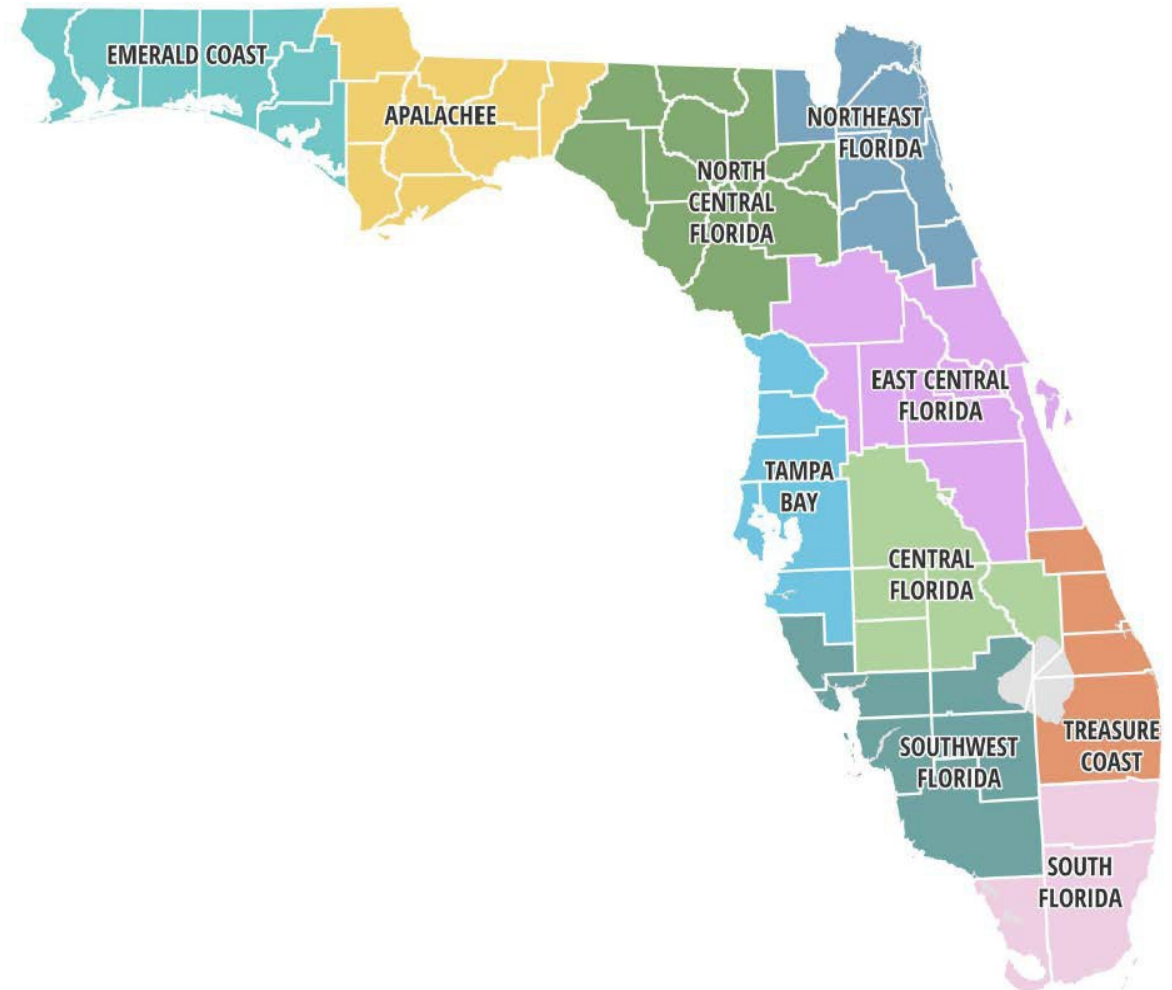
Regional Rural Transportation Plan Coordination with ALDOT



Regional Rural Transportation Plan PILOT PROJECT



- ✓ Serve as a Model for Other Areas
- ✓ Engage Rural Areas in a Similar Process to the Urban TPO Process



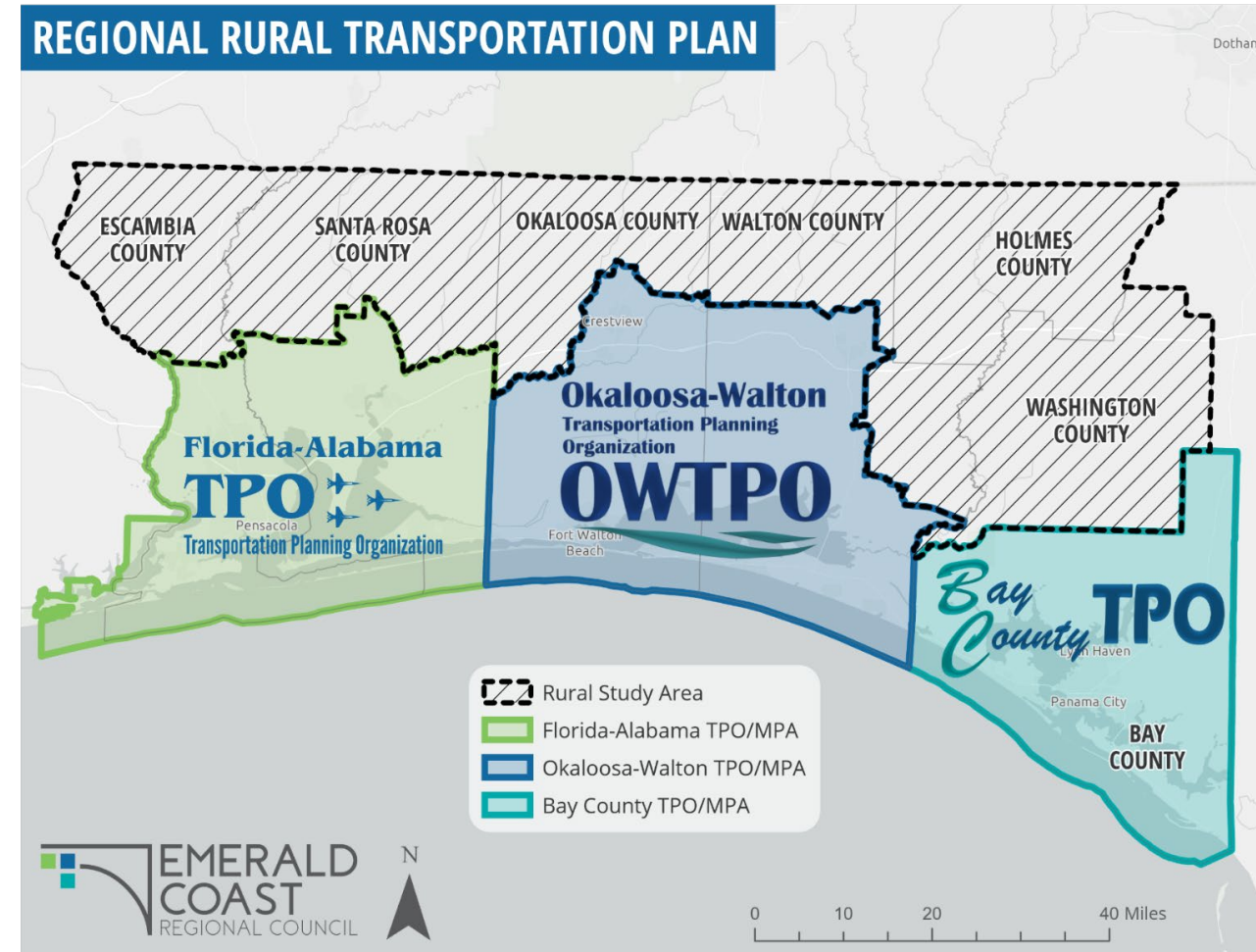
Regional Rural Transportation Plan

RURAL STUDY AREA



The RRTP contains counties within the Emerald Coast region and incorporated jurisdictions

- ✓ Bay, Walton, Okaloosa, Santa Rosa, Escambia, Holmes, Washington
- ✓ 14 Local Municipalities within the Rural Area
- ✓ Does not include the Alabama portion of the Florida-Alabama TPO



Regional Rural Transportation Plan PROCESS CREATION



Why Is The Process Needed for Rural Areas?

- ✓ Create an Ongoing Collaborative Process which Brings All Local Governments within the Regional Rural Study Area Together at One Table
- ✓ Creates a Process for Cooperative and Cohesive Transportation Planning with a Regional Approach
- ✓ Creation of a Technical Advisory Committee (TAC)
- ✓ TAC is Made Up of Representatives from Local Governments in the Rural Study Area
- ✓ This Project Creates a Similar Process as the TPO's for the Rural Areas to Create a Long Range Transportation Plan, with Short- & Long-Term Priorities



REGIONAL RURAL TRANSPORTATION PLAN

TRANSPORTATION ADVISORY COMMITTEE MEMBERS

<u>COUNTY APPOINTMENTS</u>	Appointment Date		<u>ECRC APPOINTMENTS</u>
Bay County -Keith Bryant Kbryant@baycountyfl.gov	2/26/2022	2/26/2022	Bay County – Alex King AKingportpanamacityusa.com
Escambia County- Gary "Bubba" Peters gpeters@escpa.org	2/26/2022	2/26/2022	Town of Century- Mayor, Boutwell bboutwell1@centuryflorida.us
Holmes County-Need		2/26/2022	Holmes County– David Corbin hcc@holmescountyfl.org
Okaloosa County– Tyrone Parker tparker@myokaloosa.com	2/26/2022		*Okaloosa County – Scott Bitterman sbitterman@myokaloosa.com
Santa Rosa County – Zakkiyyah Osuigwe zakkiyyahO@santarosa.fl.gov	2/26/2022	2/26/2022	Jay – Eric Seib eric.seib@outlook.com
Walton County– Anna Hudson hudanna@co.walton.fl.us	2/26/2022	4/13/2022	DeFuniak Springs– Mathew Parker parker@jpengfl.com
Washington County– Jeff Massey jmassey@washingtonfl.com	2/26/2022	2/26/2022	Washington County – Dan Miner dminer@cityofchipleay.com
They requested replacement will be on next ECRC Agenda		4/13/2022	*Town of Paxton- Ann Sexton asexton@paxtonfl.net
They requested for Larry to represent will be on next ECRC Agenda			*City of Bonifay- Larry Cook larry.cook@cityofbonifay.com
Liaison to ECRC (Austin)			Kurvin Qualls- kurvin@bellsouth.net

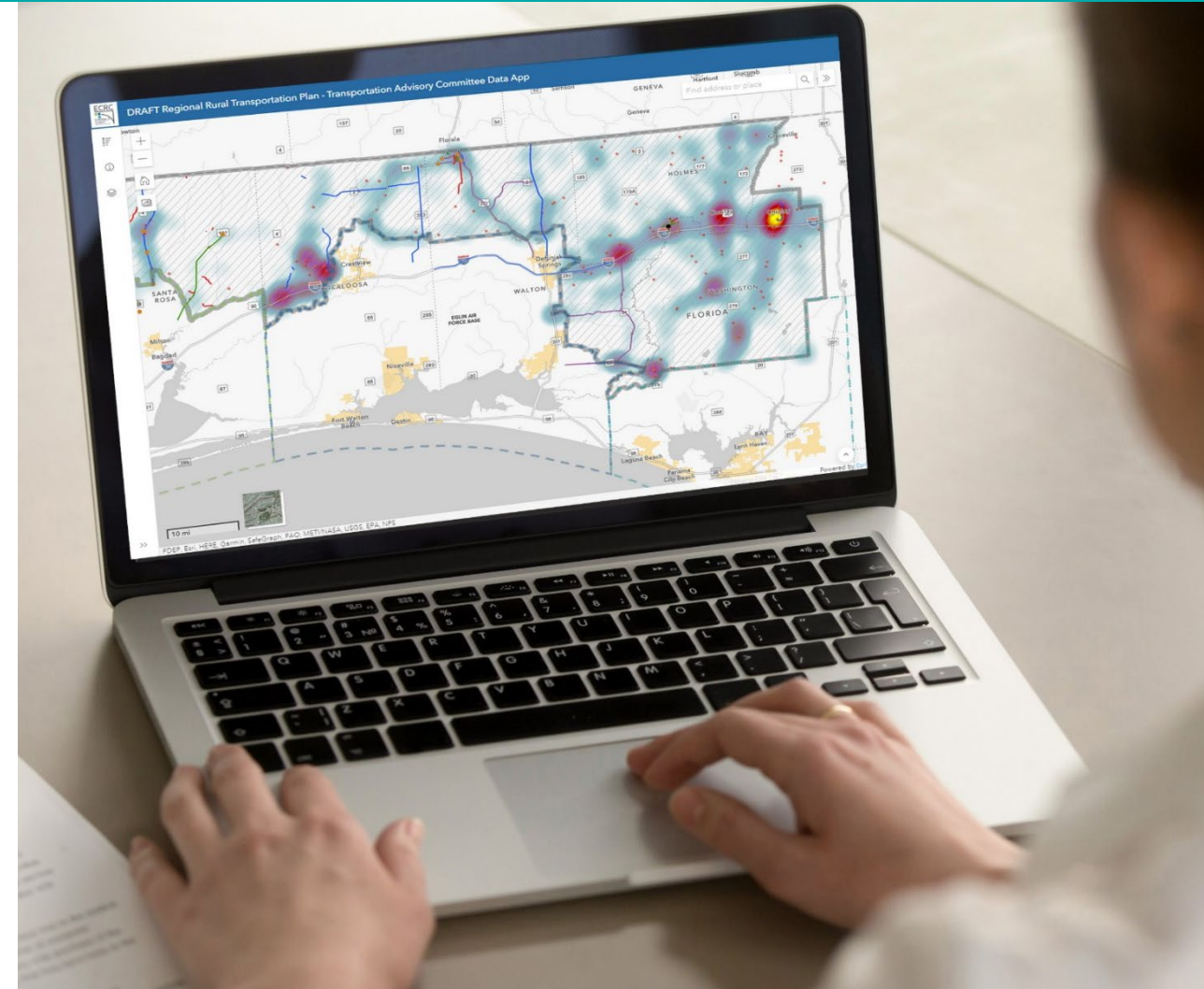
Regional Rural Transportation Plan INTERACTIVE MAP

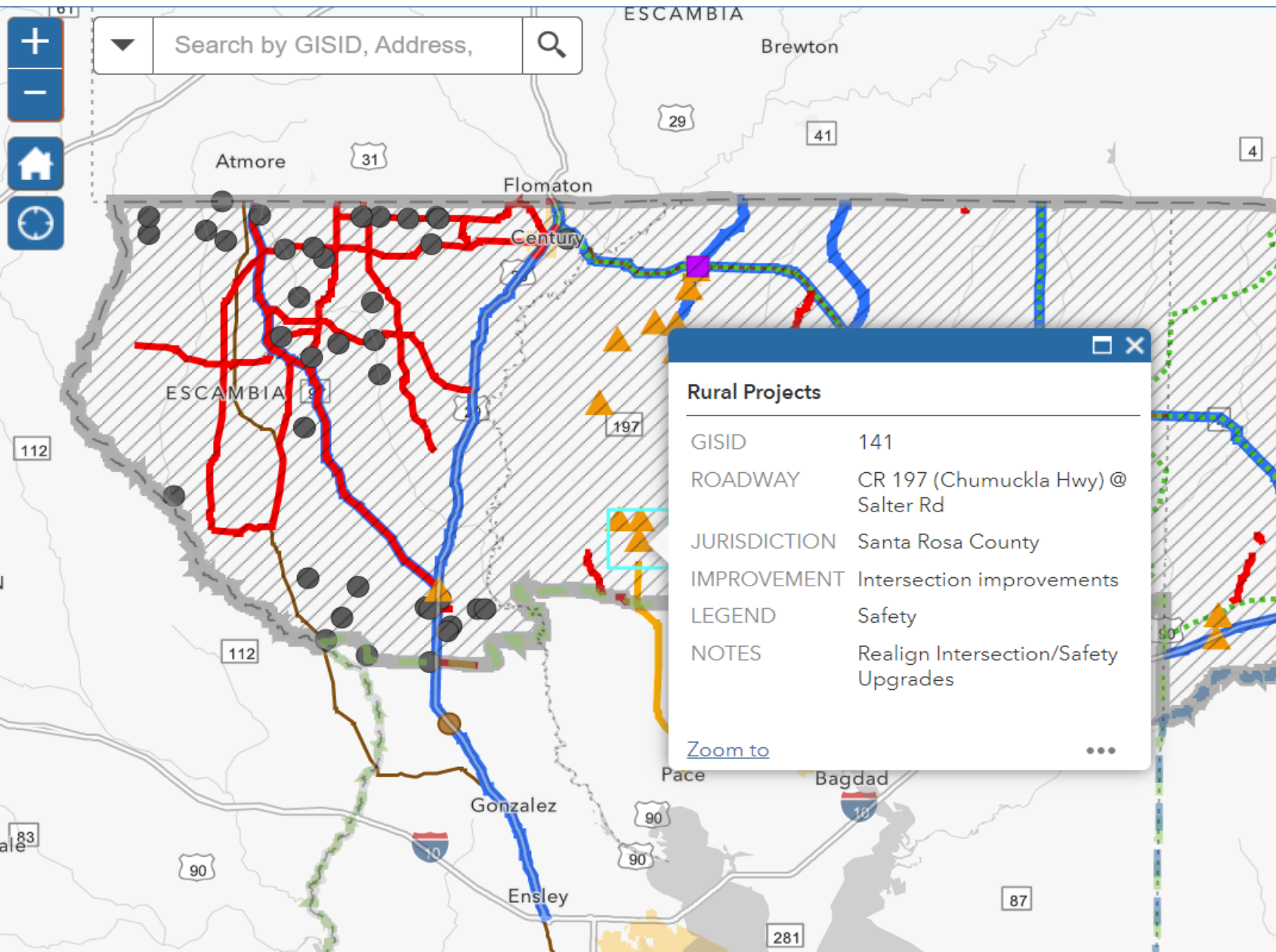


Geographic Information Systems

The Interactive Map was created to assist with data for proposed transportation projects and will also be used to document the local government projects, will accompany the final transportation plan, and is available to the public.

www.ecrc.org/RRTPMAP





Legend

Rural Study Area

- Rural Study Area

Rural Projects - Points

- Bridge
- Safety
- Park & Ride Lot
- Other
- Freight

Rural Projects - Segments

- Bike/Ped/Trails
- Safety
- Freight
- Resurfacing
- Other
- Capacity

Regional Rural Transportation Plan ADOPTION



Adoption of The Regional Rural Transportation Plan & Priorities

- ✓ 26 Short-Term and 289 Long-Term Rural Project Priorities Were Identified.
- ✓ The TAC Recommended Adoption of the Short - & Long-Term Rural Project Priorities and Plan.
- ✓ The ECRC Board Adopted the Plan.
- ✓ Short - & Long-Term Rural Project Priorities and Plan on February 8th.



Regional Rural Transportation Plan EXECUTIVE SUMMARY



An Executive Summary Can be Found within the Regional Rural Transportation Plan Along with the Following Eight Sections:

- ✓ State Planning Emphasis Areas and Federal Performance Measures
- ✓ Demographic Trends for Each County
- ✓ Data Collection and Analysis
- ✓ Data Sources
- ✓ Public Outreach
- ✓ Evaluation Criteria
- ✓ Needs Plan
- ✓ Conclusion



Regional Rural Transportation Plan

LESSONS LEARNED



The Next Steps for the TAC and Rural Process:

- ✓ Public engagement is a large part of this program. Allow sufficient time when building a schedule.
- ✓ Coordinate with local governments to identify a Champion early in the process.
- ✓ Ensure the necessary data is available for all jurisdictions before establishing the criteria. If not, establish alternative criteria.
- ✓ Provide a template to the local governments with an example of what specific project information is needed.



Regional Rural Transportation Plan NEXT STEPS



The Next Steps for the TAC and Rural Process:

- ✓ Continue to Serve as a Resource of Cooperative Regional Planning in the Rural Areas and a Platform for Education
- ✓ Will Continue to Review and Evaluate the Project Priorities



Regional Rural Transportation Plan FOR MORE INFORMATION



Please Contact:

Austin Mount | CEO

Emerald Coast Regional Council

Austin.Mount@ecrc.org

Mary Beth Washnock | Transportation Director

Emerald Coast Regional Council

MaryBeth.Washnock@ecrc.org

Regional Rural Transportation Plan DISCUSSION



Questions or Comments?



EMERALD COAST REGIONAL COUNCIL

**REGIONAL RURAL
TRANSPORTATION PLAN**